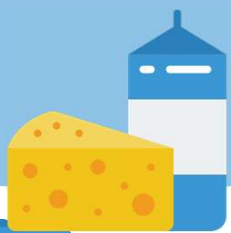


DAIRY



Organisations

- Northland Agricultural Research Farm (NARF)
- Whangarei A&P Society
- Northland Dairy Development Trust (NDDT)
- DairyNZ
- Dairy Women's Network (DWN)
- Fonterra
- Rural Support Trust (RST)
- Other...

Visions

NARF	To lead the way in showing new techniques and to provide training opportunities for young farmers and students
Whangarei A&P Society	Stands to link urban and rural, supporting the rural sector through promotion, motivation and education
NDDT	To support farmers in securing quality dairy research relevant to Northland
DairyNZ	Delivering a better future for farmers
Fonterra	Healthy People, Healthy Environment and Healthy Business
DWN	Enabling transformational change in dairy businesses

Initiatives

National Northland

Current

- Northland Inc, DairyNZ, Beef + Lamb NZ, MPI, Northland Regional Council – Extension 350, farmer-learning-from-farmer extension programme
- Fonterra, DOC – Living Water Wairua Catchment, trialling tools and solutions to enable farming, freshwater and healthy ecosystems to thrive side-by-side
- DairyNZ – environmental initiatives e.g. Dairy Environment Leaders; The Vision is Clear; adverse events groups; supporting Ballance Farm Environment Awards & Kaipara harbour catchment projects
- NARF, NDDT, Fonterra – Future Farming Systems Trial comparing three farm systems that adapt to or mitigate climate change effects
- Farmer-led supported by Northland Inc, NDDT, AgForum etc. – Northland Diversified Forages Project

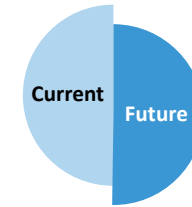
Planned

- Northland Diversified Forages Project – continue efforts to gain permission to trial new resilient pastures with traits adapted to predicted pressures of climate change



These include:

- Primary ITO
- Beef + Lamb NZ
- Mountains to the Sea Conservation Trust
- Northland Rural Support Trust
- NZ Grassland Association



- Local iwi to develop economic opportunities for Māori
- Avocado industry
- ... are there others?

Collaborators



Challenges

- **Extreme climate** – from drought to flooding; managing future challenges e.g., increased heat stress for animals; poor ryegrass performance in warm, dry conditions
- **Underperformance** – pastoral sector a notable contributor to GDP, yet underperforms relative to resources available & national performance levels e.g., due to soil types
- **Labour** – attracting & training staff; scale e.g., being big enough to warrant someone, but being able to pay them well enough as they need to be autonomous
- **Spread** – changing geographic spread of dairy farms
- **Water** – access, quality and quantity
- **External challenges** – e.g., M. Bovis, COVID
- **Greenhouse gas targets** – farmers considering how they will meet proposed government targets in the future
- **National shortage of consultants** with systems expertise

Opportunities

- **Possibility of year-round production** – as Northland dairy herds are mostly grass-fed, with continued year-round supply
- **Farm trials** – offer ways to investigate responses to climate change & government GHG targets
- **Farm ownership** – Northland dairy farms generally smaller, less expensive, can be used as a gateway for farmers wanting to build experience & equity towards ownership
- **Warm climate and recreational opportunities in Northland** – offers a 'farming lifestyle' enjoyed by many
- **Awards** – e.g., Ahuwhenua Trophy, Dairy Industry Awards



- **Support riparian planting/fencing** – could DairyNZ, forestry and environmental organisations together improve water quality, stabilise banks, encourage biodiversity, and improve the public perception of dairying?
- **Promote educational programmes** – could Northland Inc support Whangarei A&P Society's programmes to attract young people?
- **Extend the EBOP cluster** – could Northland support a cluster extension project similar to DairyNZ's EBOP cluster (Māori focus)?
- **Incentivise advisory upskilling, collaboration and employment** – could dairy work with government to overcome challenges in the advisory sector, as identified in the Primary Industries Advisory Services System and Workforce Research (2021)?
- **Promote agritourism** – could the sector collaborate with Tourism NZ and/or wine sectors to promote agritourism, e.g. luxury farm stays? Could also encourage dairy farmers from other countries to come and see how it's done in NZ – could collaborate with existing successful farm-stays undertaken in Southland

Potential cross-sector collaboration

References

[DairyNZ Northland – Plans for Region](#)

[DairyNZ - Quickstats about Dairying](#)

[Dairy's Contribution to NZ's Economy](#)

[DairyNZ – Northland Research](#)

[Northland Dairy Development Trust Trials](#)

